



3 Meath Crescent, London, E2

BUTLER & STAG



Immediately available two bedroom two bathroom apartment with park views conveniently located between Mile End station and Victoria Park.



- Two Bedroom Two Bathroom Apartment
- Immediately Available
- Balcony with Views over Meath Gardens
- Close to Mile End Station and Victoria Park
- Open-Plan Kitchen and Living Space
- Unfurnished
- Excellent Condition Throughout
- Third Floor

This modern and well-proportioned property features a spacious open-plan kitchen/dining and living space, leading out to a balcony with glorious views over the leafy Meath Gardens.

Both bedrooms are good-sized doubles and the master incorporates an en-suite shower room. The apartment is completed by the main bathroom and plenty of internal storage.

Roundwood Court forms part of a well-maintained popular development that is also located close to Regent's Canal, some great local pubs and the amenities of Roman Road

Perfect for a couple or two professional sharers, this property is offered unfurnished.

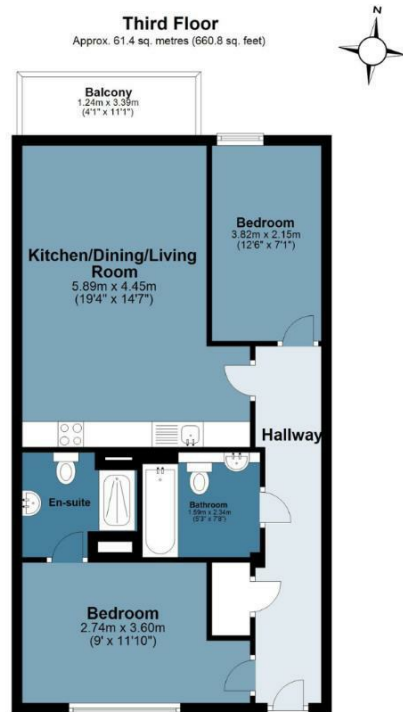




Meath Crescent

Approx. Gross Internal Area 61.4 sq. metres 660.8sq. feet)

BUTLER & STAG



Measurements are approximate and for illustration purposes only. While we do not doubt the accuracy and completeness, we advise you conduct a careful independent assessment of the property to determine monetary value
© @modephoto.uk www.modephoto.co.uk

IMPORTANT NOTICE - These particulars have been prepared in good faith and they are not intended to constitute part of an offer or contract. We have not performed a structural survey on this property and the services, appliances and specific fittings have not been tested. All photographs, measurements, floor plans and distances referred to are given as a guide and should not be relied upon.

BUTLER & STAG

☎ 020 8102 1236

🏠 508 Roman Road, Bow, London, E3 5LU

✉ bow@butlerandstag.com

www.butlerandstag.uk